

New Jersey Asset & Rebate Management Program/Joint Account

Principal Stability Fund Ratings Definitions

AAAm A fund rated 'AAAm' demonstrates extremely strong capacity to maintain principal stability and to limit exposure to principal losses due to credit risk. 'AAAm' is the highest principal stability fund rating assigned by S&P Global Ratings

AAm A fund rated 'AAm' demonstrates very strong capacity to maintain principal stability and to limit exposure to principal losses due to credit risk. It differs from the highest-rated funds only to a small degree.

Am A fund rated 'Am' demonstrates strong capacity to maintain principal stability and to limit exposure to principal losses due to credit risk, but is somewhat more susceptible to the adverse effects of changes in circumstances and economic conditions than funds in higher-rated categories

BBBm A fund rated 'BBBm' demonstrates adequate capacity to maintain principal stability and to limit exposure to principal losses due to credit risk. However, adverse economic conditions or changing circumstances are more likely to lead to a reduced capacity to maintain principal stability.

BBm A fund rated 'BBm' demonstrates speculative characteristics and uncertain capacity to maintain principal stability. It is vulnerable to principal losses due to credit risk. While such funds will likely have some quality and protective characteristics, these may be outweighed by large uncertainties or major exposures to adverse conditions.

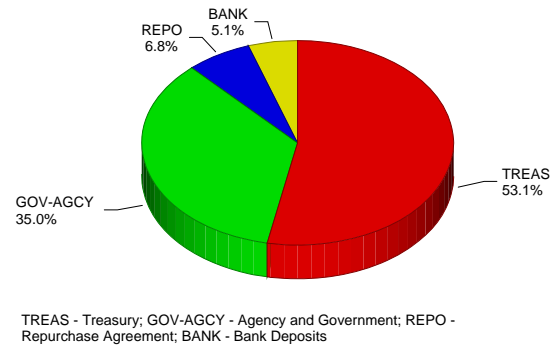
Dm A fund rated 'Dm' has failed to maintain principal stability resulting in a realized or unrealized loss of principal.

Plus (+) or Minus (-)
The ratings may be modified by the addition of a plus (+) or minus (-) sign to show relative standing within the rating categories.

About the Pool

Pool Rating	AAAm
Pool Type	Stable NAV Government Investment Pool
Investment Adviser	PFM Asset Management LLC
Phone	1-800-535-7829
Website	www.njarm.com
Portfolio Manager	Michael Varano Jeffrey Rowe, CFA
Pool Rated Since	February 1991
Custodian	U.S. Bank, N.A.
Distributor	PFM Fund Distributors, Inc.

Portfolio Composition as of March 25, 2021



Rationale

New Jersey Asset & Rebate Management Program/Joint Account is rated 'AAAm' by S&P Global Ratings. The rating is based on S&P Global Ratings' analysis of the portfolio's credit quality, investment policies, market price exposure, and management. The rating signifies our forward-looking opinion about a fixed-income fund's ability to maintain principal value (i.e., stable net asset value, or 'NAV').

Overview

NJ ARM is managed by PFM Asset Management LLC. NJ ARM's investment objective is to provide as high a level of current income as is consistent with maintaining liquidity and stability of principal and sustaining a stable NAV of \$1.00 per share. The fund is designed as an investment vehicle for bond proceeds and operating funds of municipalities located in New Jersey. PFM Fund Distributors, Inc.--a wholly owned subsidiary of PFM Asset Management LLC--serves as the fund's distributor.

Management

The fund's investment adviser is PFM Asset Management LLC (PFM). As adviser, PFM manages NJ ARM and is responsible for the purchase and sale of all portfolio assets. PFM and Public Financial Management Inc., which is under common ownership with PFM Asset Management LLC, have managed funds since 1981. The two firms act as financial advisers and/or investment advisers to cities, townships, boroughs, counties, school districts, authorities, and financial institutions throughout the country, providing clients with financial, investment advisory, and cash management services.

Portfolio Assets

NJ ARM invests primarily in U.S. Treasury bills, notes, and other obligations guaranteed by the U.S. government or its agencies or instrumentalities, and

repurchase agreements secured by such obligations. Repurchase agreements are entered into with only dealers of U.S. government securities that are recognized as 'primary dealers' or as qualified institutions' counterparties of U.S. government securities. The collateral must generally comprise no more than 30% (10% per dealer) of the fund's assets. The fund manager intends to comply with guidelines similar to those mandated for money-market funds governed by Rule 2a-7 of the Investment Company Act of 1940. These guidelines are also consistent with New Jersey regulation that governs the investment of public funds. PFM uses drawdown schedules prepared by NJ ARM participants to anticipate liquidity needs. The weighted average maturity to reset (WAM(R)) is kept below 60 days to help guarantee liquidity for redemptions and to limit market price exposure.

S&P Global Ratings Analyst: Michael Masih (212) 438 1642

www.spratings.com

Participants should consider the investment objectives, risks and charges and expenses of the pool before investing. The investment guidelines which can be obtained from your broker-dealer, contain this and other information about the pool and should be read carefully before investing.

Principal Stability Rating Approach and Criteria

A S&P Global Ratings principal stability fund rating, also known as a "money market fund rating", is a forward-looking opinion about a fixed income fund's capacity to maintain stable principal (net asset value). When assigning a principal stability rating to a fund, S&P Global Ratings analysis focuses primarily on the creditworthiness of the fund's investments and counterparties, and also its investments' maturity structure and management's ability and policies to maintain the fund's stable net asset value. Principal stability fund ratings are assigned to funds that seek to maintain a stable or an accumulating net asset value.

Generally, when faced with an unanticipated level of redemption requests during periods of high market stress, the manager of any fund may suspend redemptions for up to five business days or meet redemption requests with payments in-kind in lieu of cash. A temporary suspension of redemptions or meeting redemption requests with distributions in-kind does not constitute a failure to maintain stable net asset values. However, higher rated funds are expected to have stronger capacities to pay investor redemptions in cash during times of high market stress because they generally comprise shorter maturity and higher quality investments.

Principal stability fund ratings, or money market fund ratings, are identified by the 'm' suffix (e.g., 'AAAm') to distinguish the principal stability rating from a S&P Global Ratings traditional issue or issuer credit rating. A traditional issue or issuer credit rating reflects S&P Global Ratings view of a borrower's ability to meet its financial obligations. Principal stability fund ratings are not commentaries on yield levels.

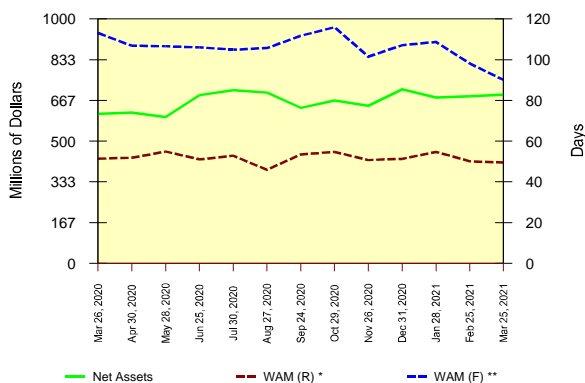
New Jersey Asset & Rebate Management Program/Joint Account

AAAm

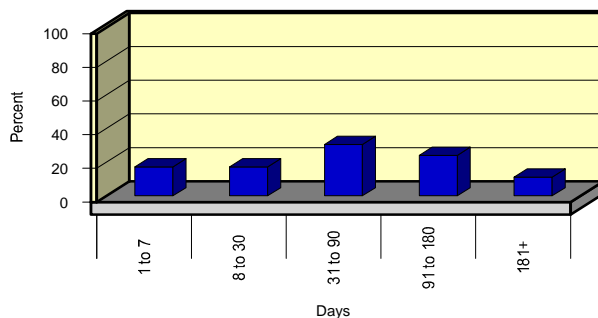
Data Bank as of March 25, 2021

Net Asset Value per Share.....	\$1.00011	Net Assets (millions).....	\$690.06	Inception Date.....	January 1990
WAM (R) *	50 days	WAM (F) **.....	90 days	7 Day Yield.....	0.02%
* Weighted Average Maturity (Reset)		** Weighted Average Maturity (Final)			

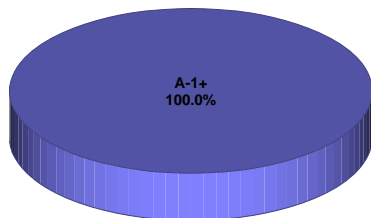
Net Assets, WAM (R) and WAM (F)



Portfolio Maturity Distribution as of March 25, 2021

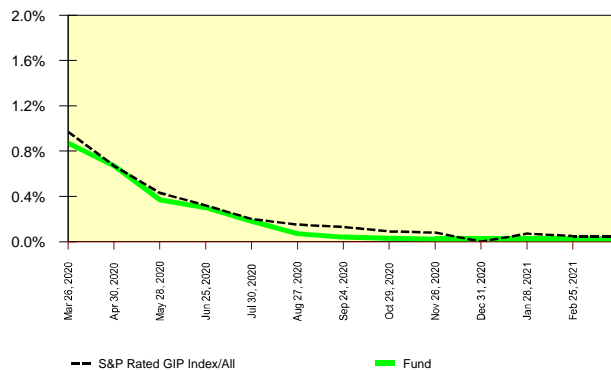


Portfolio Credit Quality as of March 25, 2021 *



*As assessed by S&P Global Ratings

Portfolio 7 Day Net-Yield Comparison *



*S&P 'AAAm' Money Fund Indices are calculated weekly by iMoneyNet, Inc., and are comprised of funds rated or assessed by S&P Global Ratings to within the specific rating categories. The S&P Global Ratings Rated LGIP Indices are calculated weekly by S&P Global Ratings and are comprised of 'AAAm' government investment pools.

The yield quoted represents past performance. Past performance does not guarantee future results. Current yield may be lower or higher than the yield quoted.

Pool portfolios are monitored weekly for developments that could cause changes in the ratings. Rating decisions are based on periodic meetings with senior pool executives and public information.

S&P Global Ratings is neither associated nor affiliated with the fund.

Copyright © 2021 by Standard & Poor's Financial Services LLC. All rights reserved. No content (including ratings, credit-related analyses and data, valuations, model, software or other application or output therefrom) or any part thereof (Content) may be modified, reverse engineered, reproduced or distributed in any form by any means, or stored in a database or retrieval system, without the prior written permission of Standard & Poor's Financial Services LLC or its affiliates (collectively, S&P). The Content shall not be used for any unlawful or unauthorized purposes. S&P and any third-party providers, as well as their directors, officers, shareholders, employees or agents (collectively S&P Parties) do not guarantee the accuracy, completeness, timeliness or availability of the Content. S&P Parties are not responsible for any errors or omissions (negligent or otherwise), regardless of the cause, for the results obtained from the use of the Content, or for the security or maintenance of any data input by the user. The Content is provided on an "as is" basis. S&P PARTIES DISCLAIM ANY AND ALL EXPRESS OR IMPLIED WARRANTIES, INCLUDING, BUT NOT LIMITED TO, ANY WARRANTIES OF MERCHANTABILITY OR FITNESS FOR A PARTICULAR PURPOSE OR USE, FREEDOM FROM BUGS, SOFTWARE ERRORS OR DEFECTS, THAT THE CONTENT'S FUNCTIONING WILL BE UNINTERRUPTED OR THAT THE CONTENT WILL OPERATE WITH ANY SOFTWARE OR HARDWARE CONFIGURATION. In no event shall S&P Parties be liable to any party for any direct, indirect, incidental, exemplary, compensatory, punitive, special or consequential damages, costs, expenses, legal fees, or losses (including, without limitation, lost income or lost profits and opportunity costs or losses caused by negligence) in connection with any use of the Content even if advised of the possibility of such damages.

Credit-related and other analyses, including ratings, and statements in the Content are statements of opinion as of the date they are expressed and not statements of fact. S&P's opinions, analyses and rating acknowledgment decisions (described below) are not recommendations to purchase, hold, or sell any securities or to make any investment decisions, and do not address the suitability of any security. S&P assumes no obligation to update the Content following publication in any form or format. The Content should not be relied on and is not a substitute for the skill, judgment and experience of the user, its management, employees, advisors and/or clients when making investment and other business decisions. S&P does not act as a fiduciary or an investment advisor except where registered as such. While S&P has obtained information from sources it believes to be reliable, S&P does not perform an audit and undertakes no duty of due diligence or independent verification of any information it receives.

To the extent that regulatory authorities allow a rating agency to acknowledge in one jurisdiction a rating issued in another jurisdiction for certain regulatory purposes, S&P reserves the right to assign, withdraw or suspend such acknowledgement at any time and in its sole discretion. S&P Parties disclaim any duty whatsoever arising out of the assignment, withdrawal or suspension of an acknowledgement as well as any liability for any damage alleged to have been suffered on account thereof.

S&P keeps certain activities of its business units separate from each other in order to preserve the independence and objectivity of their respective activities. As a result, certain business units of S&P may have information that is not available to other S&P business units. S&P has established policies and procedures to maintain the confidentiality of certain non-public information received in connection with each analytical process.

S&P may receive compensation for its ratings and certain analyses, normally from issuers or underwriters of securities or from obligors. S&P reserves the right to disseminate its opinions and analyses. S&P's public ratings and analyses are made available on its Web sites, www.standardandpoors.com (free of charge), and www.ratingsdirect.com and www.globalcreditportal.com (subscription), and may be distributed through other means, including via S&P publications and third-party redistributors. Additional information about our ratings fees is available at www.standardandpoors.com/usratingsfees.

S&P GLOBAL RATINGS, S&P, GLOBAL CREDIT PORTAL and RATINGSDIRECT are registered trademarks of Standard & Poor's Financial Services LLC.